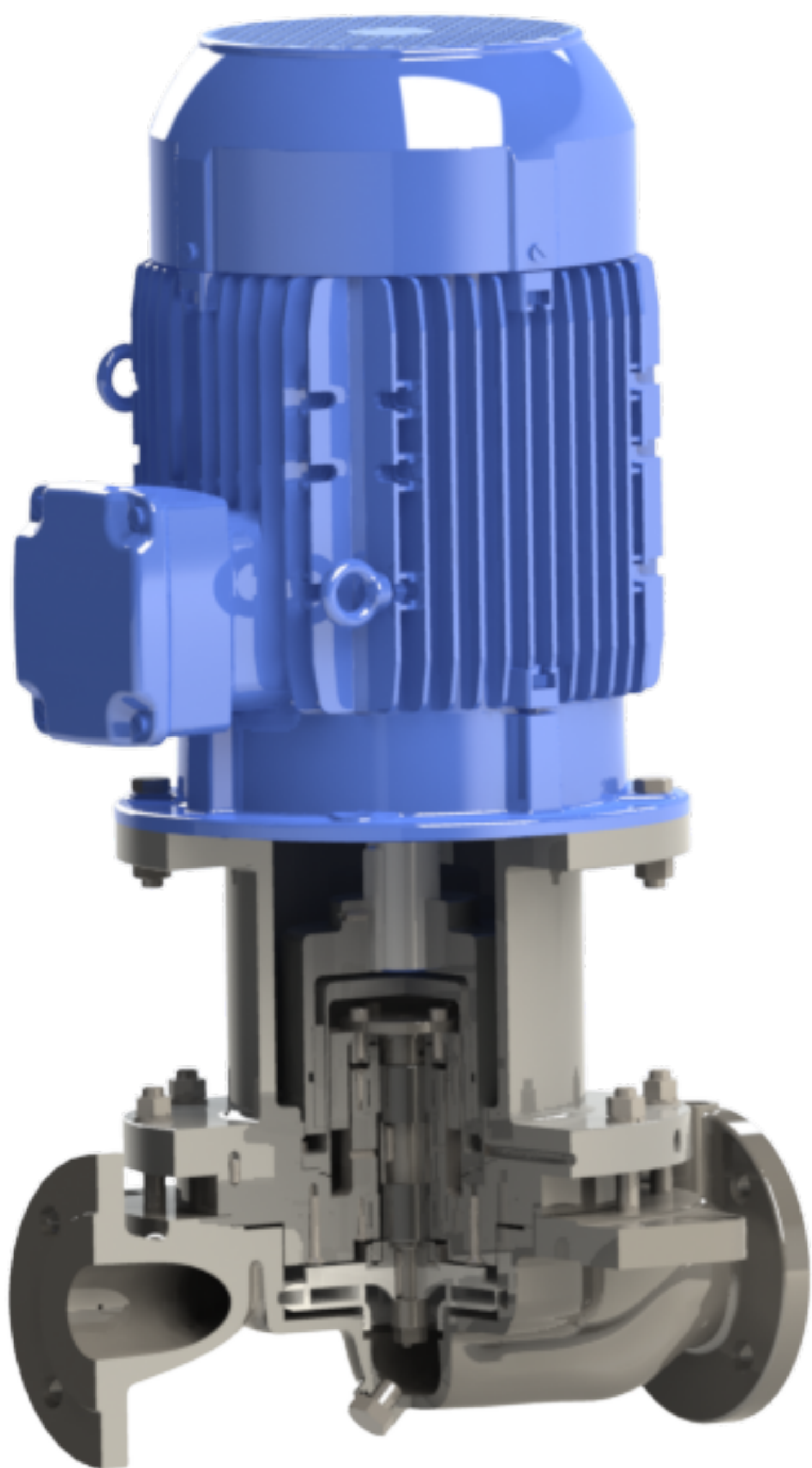






## In-Line Magnetic Drive Pump.



## NDM-NCP Series

---

-  Durability & Reliability
-  Easy maintenance
-  Performances
-  Safety



# Optimize your installations

Our pumps operate **safely** to convey all your fluids: they are dedicated to all kinds of industrial services, including the **pumping of hazardous chemicals**.


**Reduced dimensions**

**No risk of leakage**

**Excellent corrosion resistance**

4 sizes in stock : NDM-NCP 4-160 / 4-200 / 5-160 / 5-200

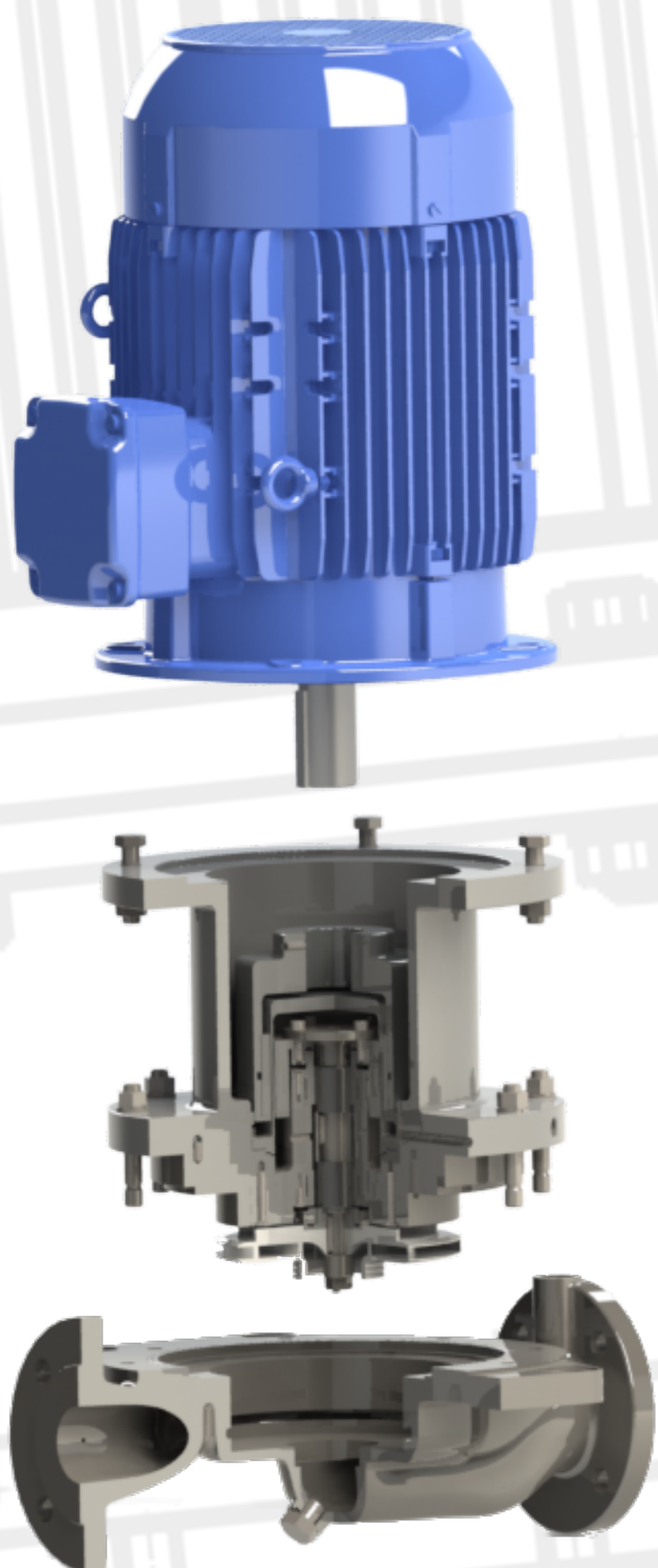
Efficient and performant hydraulic

ATEX   II 2 G - Zone 1 and 2

Standard construction in Stainless Steel 1.4409

2/4-poles motor, axis high until 132 mm

Temperatures : -20°C / 200 °C



## Avantages

**Plug & Play** : Full interchangeability with our SMN pumps

**Modular design** : buy only the parts of the pump you need

### Pompes Rüttschi SAS

61, avenue de Fribourg,  
FR-68110 Illzach-Mulhouse, France  
Tel : +33 3 89 61 68 00  
E-mail: [contact@grupperutschi.com](mailto:contact@grupperutschi.com)  
[www.grupperutschi.com](http://www.grupperutschi.com)

### Rüttschi Fluid AG

Herzogstrasse 11  
CH-5200 Brugg, Switzerland  
Tel : +41 56 460 55 00  
E-mail: [contact@grupperutschi.com](mailto:contact@grupperutschi.com)  
[www.grupperutschi.com](http://www.grupperutschi.com)